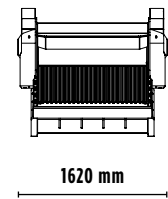
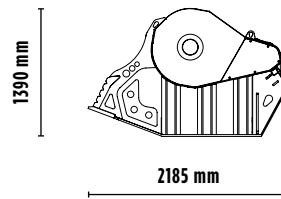
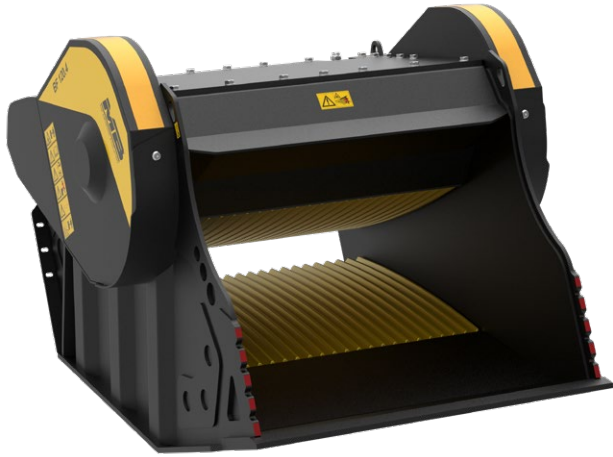


BF 120.4 S4




ACCESSORIES

- RECOMMENDED SPARE PARTS KIT
- FIXED COUPLING
- IRON SEPARATOR
- HOUR METER
- DUST SUPPRESSION KIT
- 24 MONTHS WARRANTY



SPECIFICATIONS

EQUIPMENT	 ≥ 30 Ton
LOAD CAPACITY	1,30 m ³
OPENING DIMENSIONS	L 1205 H 540 mm
OUTPUT SETTING	≥ 15 ≤ 145 mm
DIMENSIONS	2185 x 1620 H 1390 mm
OIL FLOW	210 l/min.
PRESSURE	> 220 bar
WEIGHT	4,80 Ton

AREAS OF APPLICATION



RECYCLING



LARGE-SCALE
URBAN SITES



ROAD WORKS



DEMOLITION



EXCAVATION



QUARRIES
AND MINES



FOUNDRY



UTILITY
WORK

The data provided above is not binding, as the manufacturer reserves itself the right to make improvements to its products at any time and with no advance notice. References to excavator weights are approximate and many may be subject to changes.

Rev. 2019 / 03



WWW.MBCRUSHER.COM